

Attila ABA
aba@kku.bme.hu

Miklós BÁNFI
banfimiklos@kku.bme.hu

Dénes VÁLÓCZI
valoczi@kku.bme.hu

Infrastructure and Info- communication Development in Hungary in the Having Regard to Disabled People

Dénes VÁLÓCZI



M Ű E G Y E T E M 1 7 8 2

Faculty of Transportation Engineering and Vehicle Engineering
Department of Transportation Technology and Economics

Pardubice
25th of November 2014

Public Transport Accessibility in Visegrad 4 Countries

- Examples from Budapest
 - Tactile signs
 - Loudspeakers
 - Barrier-free access
- Regulations

Worn tactile signals



By installation of new or modernisation of old pedestrian crossings only with stone tactile signs instead of bonded

Worn pedestrian crossing



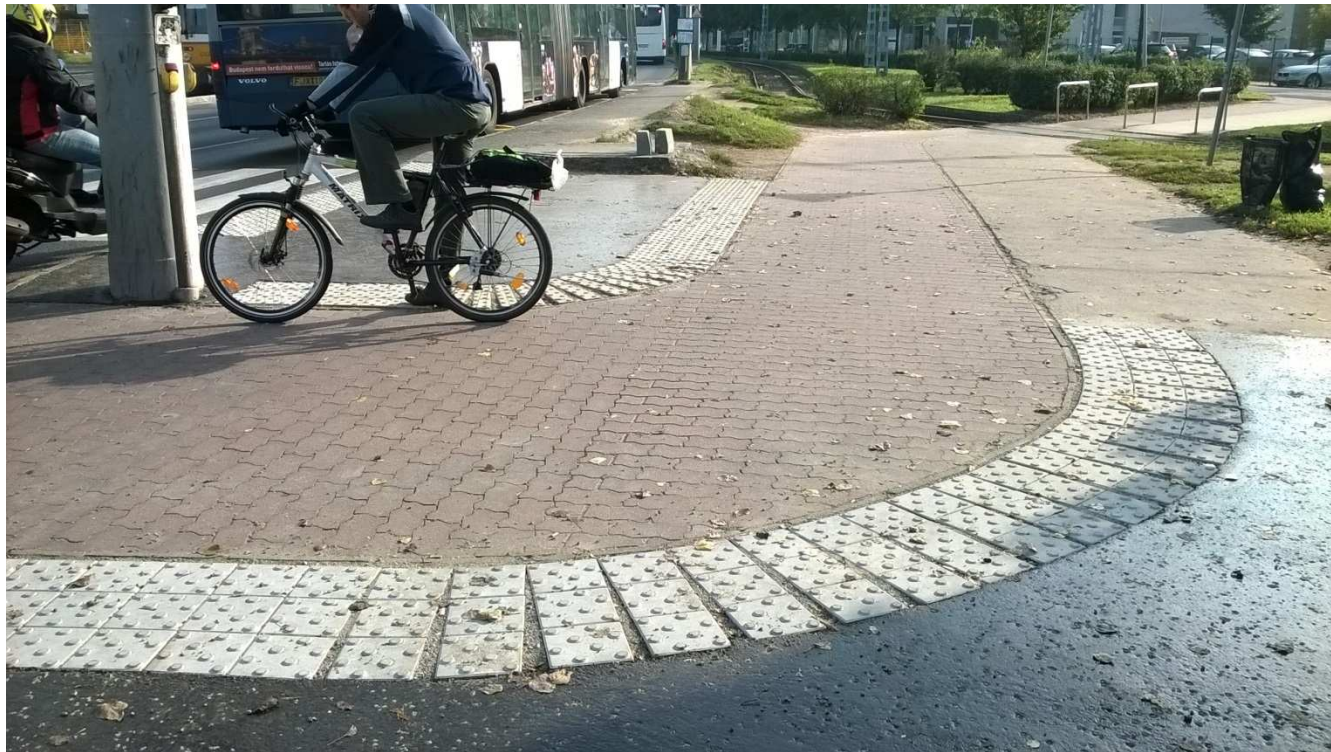
Budapest has about 280000 m² traffic markings and it has to renew circa 50000 m² markings every year

Pedestrian crossing in switch-zone



Obvious
problem -
Practically
impassive for
wheelchaire
users.

Tactile signs – stop sign at bicycle road



No guidance lane – both functions are on the same level

New tactile signs at pedestrian crossing



Guidance lane must point to the other side of the street in the axis of the pedestrian crossing – this example points to the center of the intersection

New tactile signs at pedestrian crossing – change of direction sign



- Official change of direction sign – ball line
- Innovation of constructor –
Modernisation of tram 1 line, Budapest, 2014

New tactile signs on platform of tram 1



- Safety lane and tactile paving in one
- Guidance lane points to the barrier-free access of the tram

Intersection loudspeaker

Clack

- Different direction with different frequency

Text

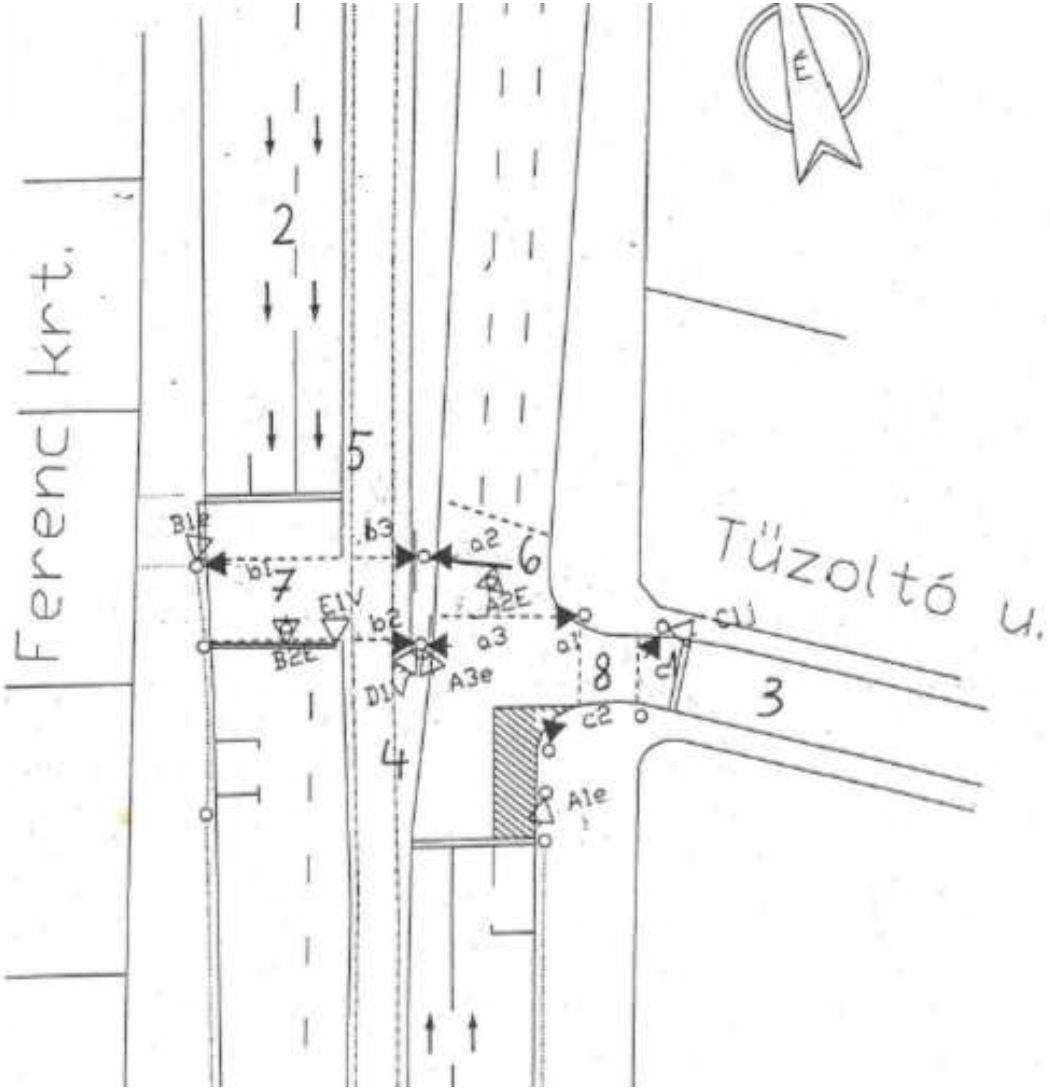
- „Könyves Kálmán körút zöld, átkelhet az úton”
- Because of the short greentime the most important information should be read out first – direction

Push-button pedestrian check-in



- Intersection loudspeaker activation:
 - With check-in button – every pedestrian sign will have acoustic sign
 - With remote control – only at actual demand

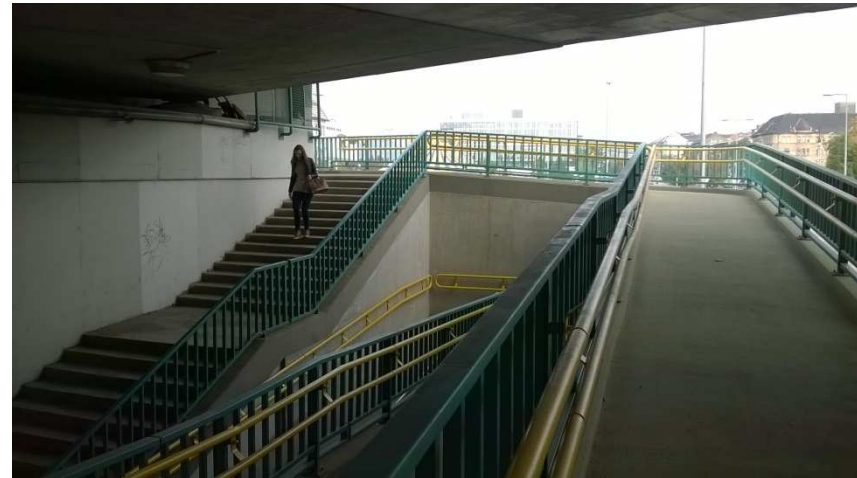
Further examples



Barrier-free access



- Weelchair access to all stations of tram 1
- Ramp of Rákóczi bridge station



Information panel



Additional information about low floor vehicles are missing

Illegal use of handicapped parking lot



- Legislation is circumventable
- Disabled people must park several corners away
- Supplier of shopping mall

Disabled person with sportscar



Not the most practical choice

Illegal parking on pedestrian crossing



Attila ABA
aba@kku.bme.hu

Miklós BÁNFI
banfimiklos@kku.bme.hu

Dénes VÁLÓCZI
valoczi@kku.bme.hu

Thank you for your attention!